



Funded by the Horizon-Europe Framework Programme
of the European Union

Towards creating the first European Atlas of Soil Fauna

Jérôme Cortet, Maria Tsiafouli, Paul Henning Krogh, David Russel



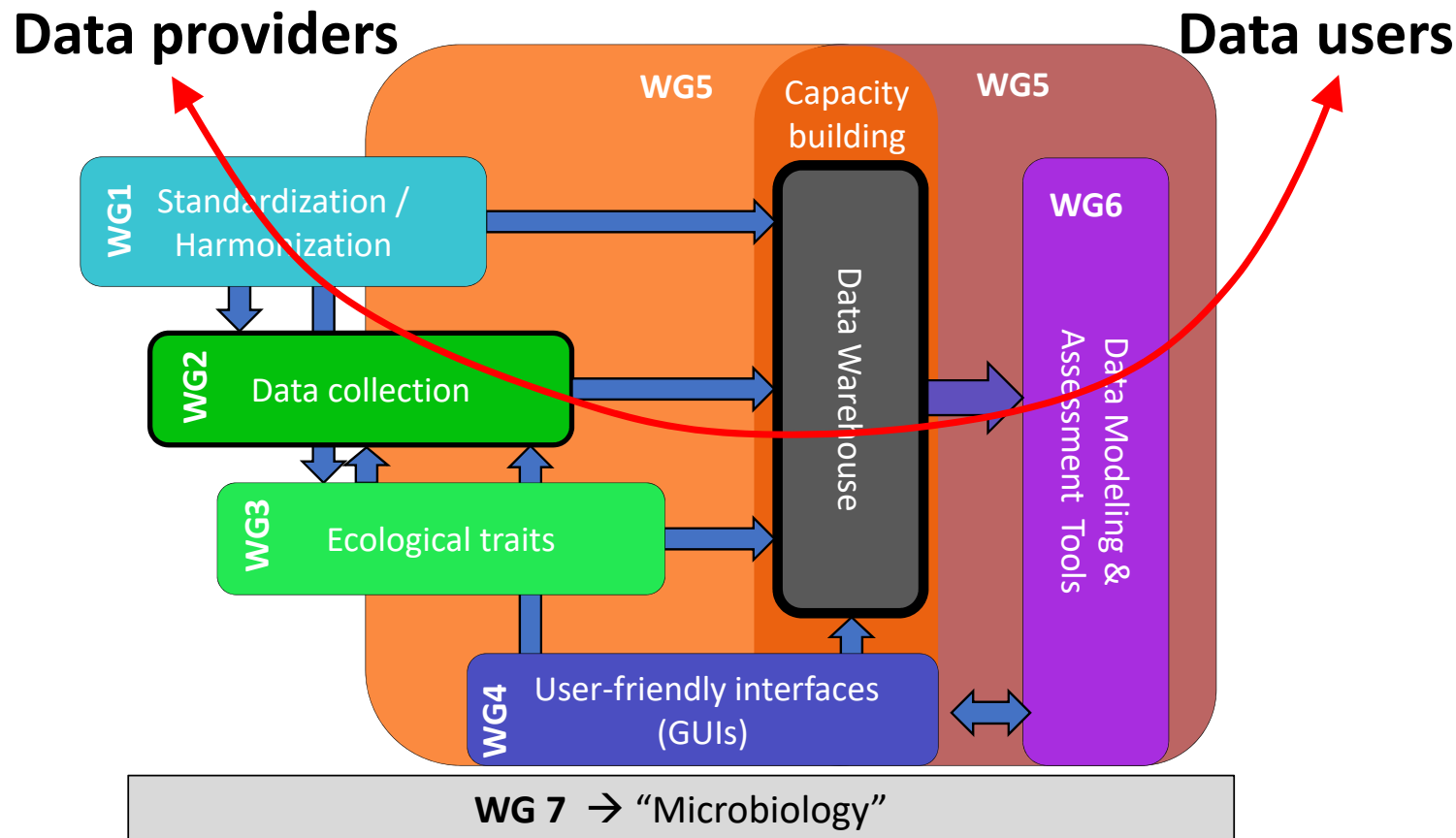
ARISTOTLE
UNIVERSITY OF
THESSALONIKI



AARHUS UNIVERSITY

SENCKENBERG
world of biodiversity

COST Action EUdaphobase: collect data on soil organisms to produce new information on soil biodiversity for citizen



Produce an Atlas on soil fauna

Part A: Soil fauna groups

Section A1

Why we need to study
Soil Fauna

Section A2

History of soil zoology

Section A3

How to study soil
animals

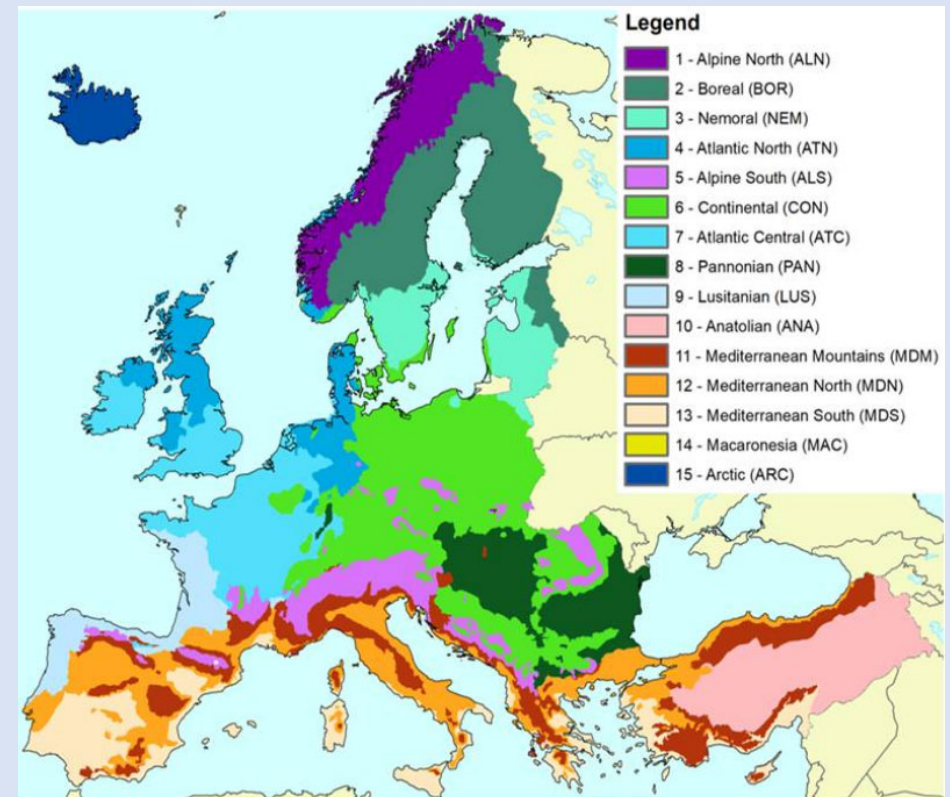
Section A4

Link/map of expertise
contacts, laboratories
that extract soil
animals and network

Section A5

Citizen science

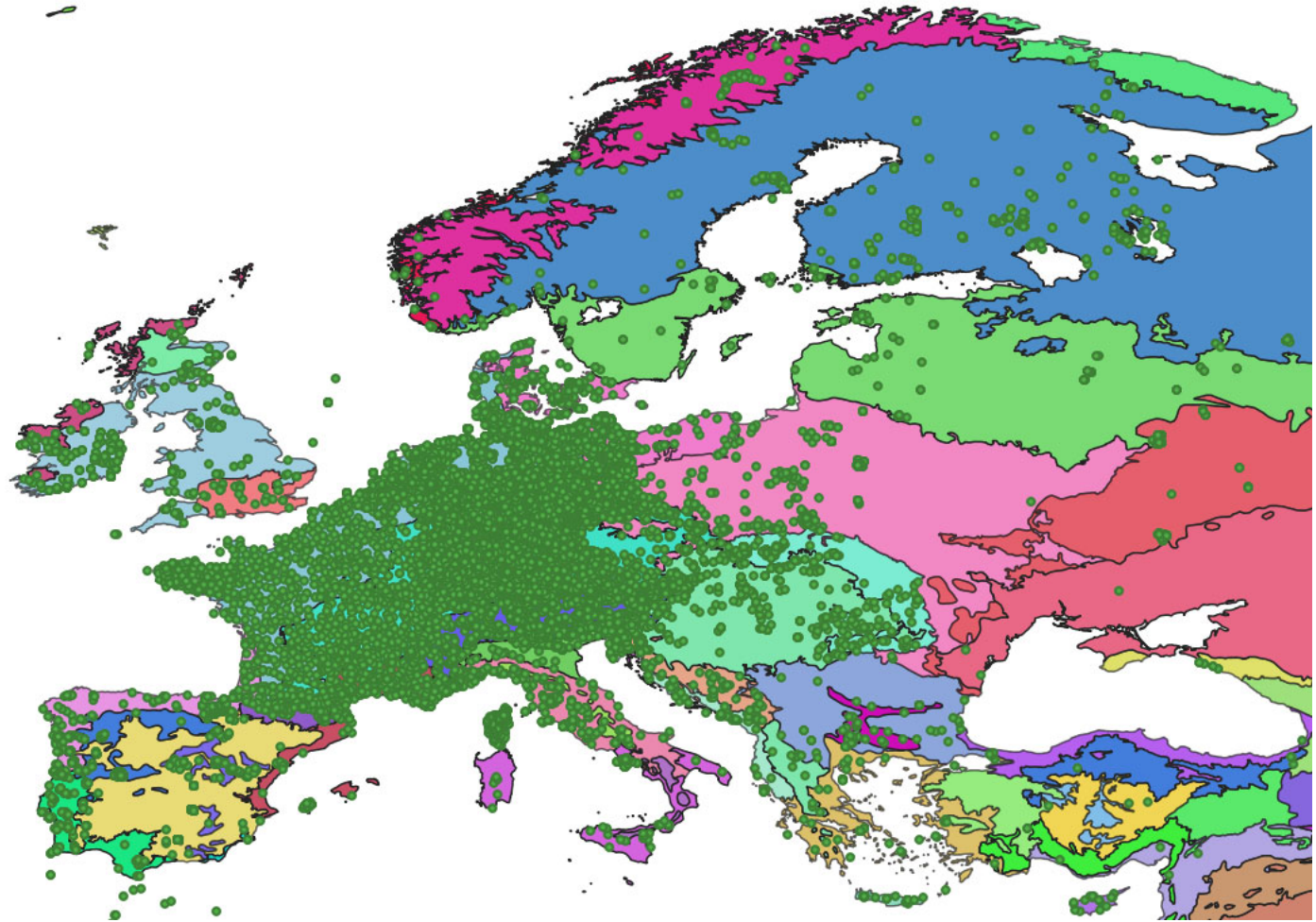
Part B: Mapping



Soil fauna study sites in Europe



We need more data, especially in Scandinavia, East and South Europe



Contributors to the Atlas

Andrey Zaitsev, Anita Risch, Annely Kuu, Anton Potapov, Arianna Latini, Beat Frey, Carlos A. Martínez-Muñoz, Christian Mulder, Cristina Fiera, David Russell, Davorka Hackenberger, Jérôme Cortet, Jiri Schlaghammerski, Kaarel Sammet, Kaloyan Kostov, Karin Hohberg, Lourdes Morillas, M.J.I. Briones, Maka Murvanidze, Maria Tsiafouli, Marjetka Suhadolc, Meriç Çakır, Mickael Hedde, Miko Ladislav, Oren Shelef, Patrick Pachl, Paul Henning Krogh, Ricarda Lehmitz, Ryszard Laskowski, Sara Di Lonardo, Stephan Jänsch, Stephan Lesch, Susana Loureiro, Sylvain Gérard, Tanja Trakic, Viesturs Melecis, Visa Nuutinen, Rüdiger Schmelz, Pierre Ganault, Sara di Lonardo, Auclerc Apolline, V Burton, Sylvain Gerard, Rienks Froukje, Sandra Barandal, Sophie Joimel

→ You are welcome to join this Community !

10 min. Questionnaire

European ATLAS of SOIL FAUNA

Protection of soil biodiversity is essential for ensuring the provision of ecosystem services. Although numerous studies about soil animals have been elaborated in Europe, a compiled dataset from European soil fauna studies is still missing. To cover this knowledge gap, we are working to produce the "European Atlas of Soil Fauna" in the framework of the EUdaphobase COST Action (<https://www.eudaphobase.eu/>).

We plan to collect and include datasets provided by European researchers working on this topic, who would like to highlight their data and become co-creators and co-authors of this collective initiative. Through the collation of actual data throughout Europe the planned European Atlas of Soil Fauna will present the current state of soil fauna distribution and its relationships.

The questionnaire below gathers information about potential participants who are interested in working on text and/or provide (published) data for the Atlas. Filling the questionnaire will take about 10 minutes. Your personal data (e-mail address, name and institute will be not be made publically available).

For more information please contact:

Maria Tsiafouli (tsiafoul@bio.auth.gr) and Jérôme Cortet (jerome.cortet@univ-montp3.fr)

Thanks you for your time and cooperation!

https://docs.google.com/forms/d/1Ki5LEaK9q8yCKBOs4yDaP634U6fM_SCKTsV6m4pikSU/edit

Questionnaire

What kinds of organisms do you have data on?

- ☐ Earthworms
- ☐ Isopods
- ☐ Millipeds
- ☐ Enchytraides
- ☐ Collembola
- ☐ Mites
- ☐ Nematodes
- ☐ Protozoa
- ☐ Other group

Which kind of data are reported in your fauna data sets? *

- ☐ Biomass
- ☐ Abundance or density
- ☐ Taxonomic richness (number of taxa)
- ☐ Community composition and/or structure
- ☐ Functional (trait) diversity
- ☐ Molecular information (DNA/RNA)
- ☐ Other...

Would you like to contribute to the Atlas by e.g. writing text and/or providing data? *

- ☐ Yes
- ☐ No
- ☐ Possibly

What kind of ecosystem/land use does your data concern (Corine Land Cover)?

- ☐ 1.1 Urban fabric
- ☐ 1.2 Industrial, commercial and transport units
- ☐ 1.3 Mine, dump and construction sites
- ☐ 1.4 Artificial, non-agricultural vegetated areas
- ☐ 2.1 Arable land
- ☐ 2.2 Permanent crops
- ☐ 2.3 Pastures
- ☐ 2.4 Heterogeneous agricultural areas
- ☐ 3.1 Forest
- ☐ 3.2 Shrub and/or herbaceous vegetation associations
- ☐ 3.3 Open spaces with little or no vegetation
- ☐ 4.1 Inland wetlands
- ☐ 4.2 Coastal wetlands
- ☐ Other...

https://docs.google.com/forms/d/1Ki5LEaK9q8yCKBOs4yDaP634U6fM_SCKTsV6m4pikSU/edit

To contact us

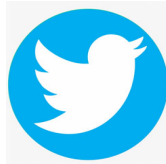
- Maria Tsiafouli & Jérôme Cortet

tsiafoul@bio.auth.gr

Jerome.cortet@univ-montp3.fr

- Twitter

@soilfaunaAtlas



- Link to Questionnaire



Funded by the Horizon-Europe Framework Programme
of the European Union

<https://EUdaphobase.eu/>

Thank you for your attention !