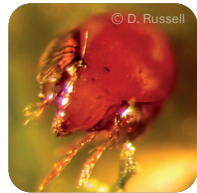


Soil biodiversity,
and particularly soil fauna,
drives essential soil functions
leading to crucial
ecosystem services



Many research activities have produced data,
which are widely dispersed and not easily
available. Their re-usability is limited

The Atlas aims to collate a maximum of
available data on soil fauna (micro-, meso-
and macrofauna) from the European territory
to create the first comprehensive
"European Atlas of Soil Fauna"

Read the published call:



Follow these steps to become a
co-creator of the Atlas initiative!

STEP
01

COMPLETE THE QUESTIONNAIRE

The Atlas questionnaire gathers
information on potential data providers.
For the questionnaire you can scan the
QR code at the bottom of this page.

STEP
02

USE THE DATA TEMPLATE

Upon agreeing to provide data for the Atlas,
you will receive via e-mail a data template
and instructions. You have to fill out the
template and send it back within 2 months.

STEP
03

YOUR DATA

Your data will be reviewed and used for
analysis and the creation of the Atlas maps.
Upon consent, your data can also be up-
loaded to the Edaphobase data warehouse.

STEP
04

SOIL FAUNA MAPS

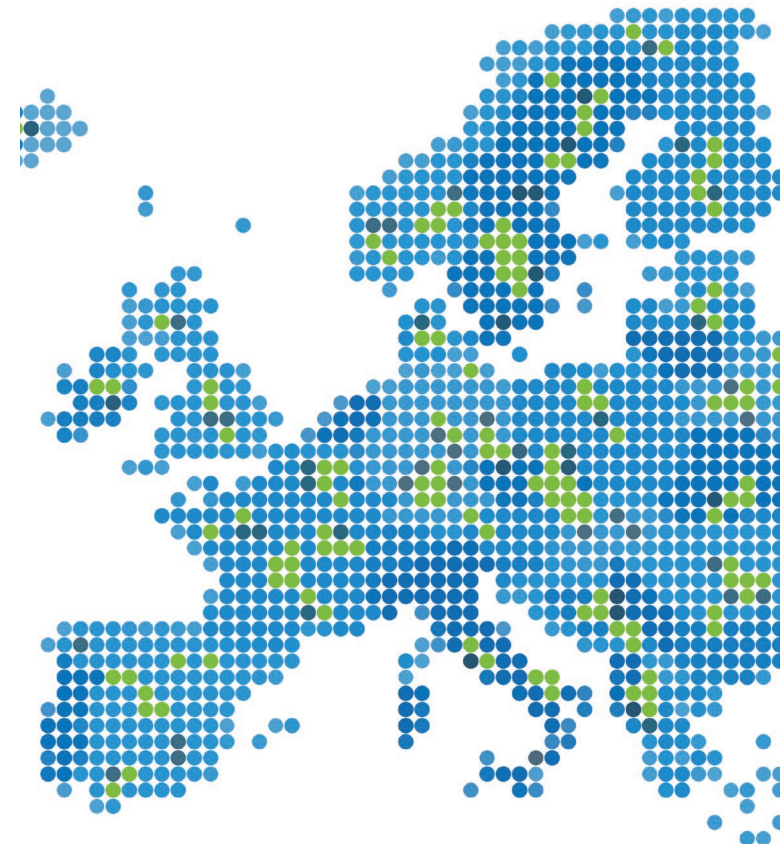
The data set collection will allow the
presentation of the current state of soil
fauna distribution and its relationship to
land use, soil characteristics and climate.

Scan here for **the questionnaire:**



The European Atlas of Soil Fauna

A call for collaboration



Co-create the Atlas
through data mobilization!



Data mobilization is a vibrant collaborative effort

“Data owners” become “co-creators” of the Atlas by contributing their soil fauna data to an overall European data set. The data set will be used to produce information and maps on soil fauna distribution and diversity across Europe, to support research, policy, education, conservation and monitoring activities.

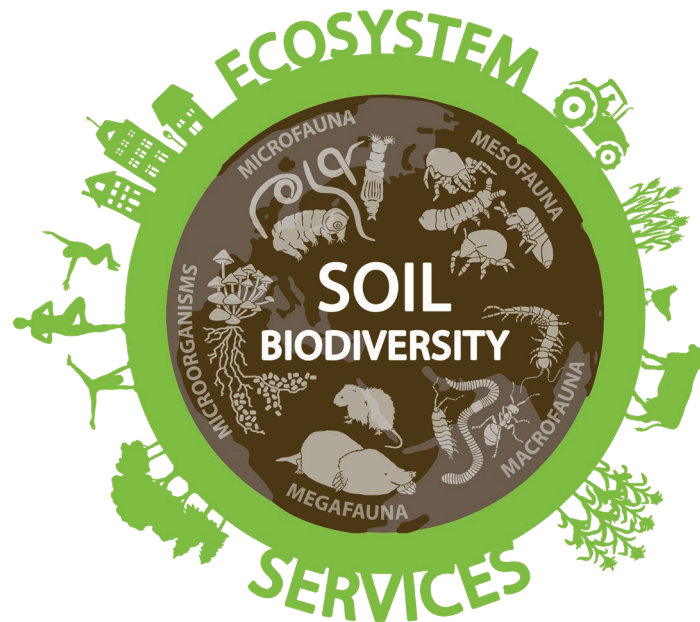


Subject to the consent of data owners, **data will be uploaded to the publicly available soil-biodiversity data warehouse “Edaphobase”**

Help put soil animals on the map!
Support conservation of soil biodiversity!

This call is based on work from the COST Action EUdaphobase (CA18237), supported by COST (European Cooperation in Science and Technology). COST (European Cooperation in Science and Technology) is a funding agency for research and innovation networks. Its Actions help connect research initiatives across Europe and enable scientists to grow their ideas by sharing them with their peers. This boosts their research, career and innovation.

www.cost.eu

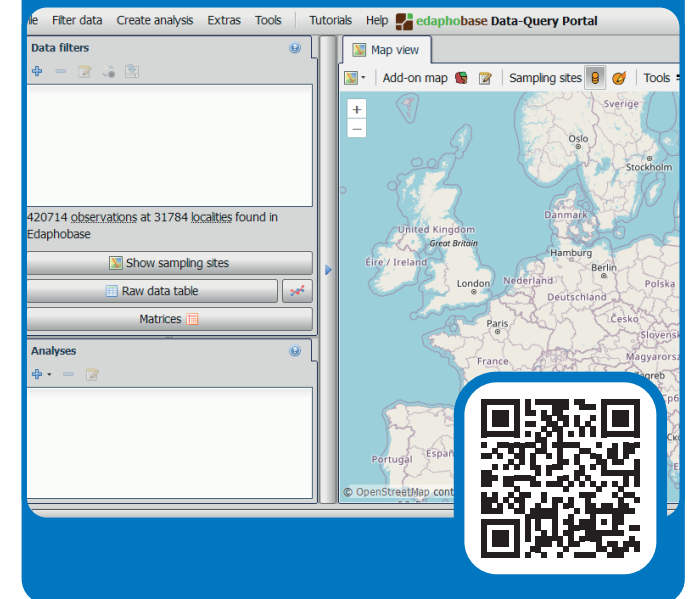


The Atlas will be published in open access

(e.g., CC-BY license), with the option of an online version for future updates.

We are, however, strongly committed to respecting and acknowledging the intellectual property rights of all data owners.

Visit at <https://portal.edaphobase.org>



Data owners can receive DOIs for specific data sets

- Make your data more accessible
- Increase the visibility of your research
- Data available in Edaphobase can also serve future data-analyses in research, monitoring, and decision-making